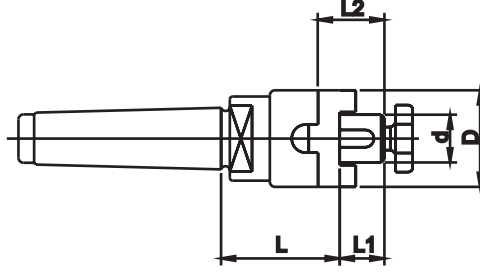


**MK KOMBİNE MALAFALAR - ÇEKTİRMELİ**

**DIN 228 FORM A**



ALIN CİVATASI, TIRNAKLI PUL VE KAMA İLE BİRLİKTE TESLİM EDİLİR.

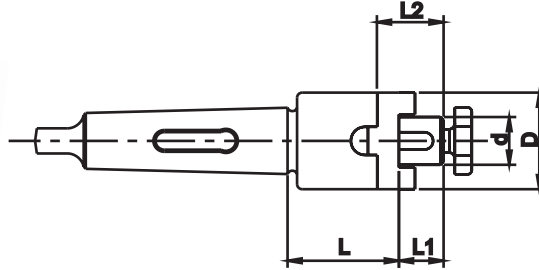
**DIN 6358** **DIN 2207**

- MALZEME: 20 Mn Cr5
- SERTLİK: 58 ± 2 HRc (Derinlik 0,6-0,9 mm)
- AÇI: DIN 7178-1/AT3
- SALGI: MAX. 0,006 mm

SİP. NR.	KONİK	d (mm)	D (mm)	L (mm)	L1 (mm)	L2 (mm)	FİYAT KODU
MK4.C.16.K	MK4	16	32	50	17	27	00758
MK4.C.22.K	MK4	22	40	50	19	31	00759
MK4.C.27.K	MK4	27	48	60	21	33	00760
MK4.C.32.K	MK4	32	58	60	24	38	00761
MK4.C.40.K	MK4	40	70	65	27	41	00762
MK5.C.16.K	MK5	16	32	60	17	27	00763
MK5.C.22.K	MK5	22	40	60	19	31	00764
MK5.C.27.K	MK5	27	48	65	21	33	00765
MK5.C.32.K	MK5	32	58	70	24	38	00766
MK5.C.40.K	MK5	40	70	70	27	41	00767

**MK KOMBİNE MALAFALAR - KAMALI**

**DIN 228 FORM B**



ALIN CİVATASI, TIRNAKLI PUL VE KAMA İLE BİRLİKTE TESLİM EDİLİR.

**DIN 6358** **DIN 1806**

- MALZEME: 20 Mn Cr5
- SERTLİK: 58 ± 2 HRc (Derinlik 0,6-0,9 mm)
- AÇI: DIN 7178-1/AT3
- SALGI: MAX. 0,006 mm

SİP. NR.	KONİK	d (mm)	D (mm)	L (mm)	L1 (mm)	L2 (mm)	FİYAT KODU
MK4.K.16.K	MK4	16	32	50	17	27	00768
MK4.K.22.K	MK4	22	40	50	19	31	00769
MK4.K.27.K	MK4	27	48	50	21	33	00770
MK4.K.32.K	MK4	32	58	60	24	38	00771
MK4.K.40.K	MK4	40	70	60	27	41	00772
MK5.K.16.K	MK5	16	32	50	17	27	00773
MK5.K.22.K	MK5	22	40	50	19	31	00774
MK5.K.27.K	MK5	27	48	50	21	33	00775
MK5.K.32.K	MK5	32	58	50	24	38	00776
MK5.K.40.K	MK5	40	70	50	27	41	00777