

**MK PENS BAŞLIKLARI -KAMALI**

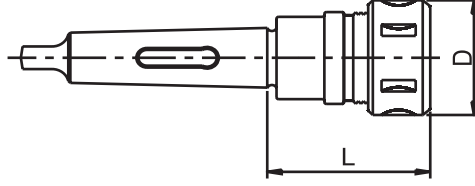
**DIN 228 FORM B**

**OZ TİP**

**DIN 1806**



KAPAK İLE BİRLİKTE TESLİM EDİLİR.



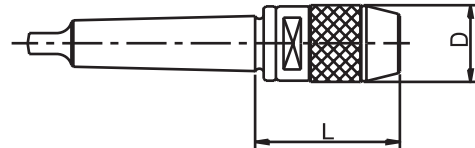
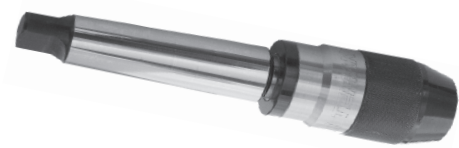
**DIN 6388  
ISO 10897**

- MALZEME: 20 Mn Cr5
- SERTLİK: 58 ± 2 HRc (Derinlik 0,6-0,9 mm)
- AÇI: DIN 7178-1/AT3
- SALGI: MAX. 0,006 mm

SİP. NR.	KONİK	KAPASİTE (mm)	L (mm)	D (mm)	FİYAT KODU
MK3.K.462E	MK3	3-25	77	60	00746
MK4.K.462E	MK4	3-25	78	60	00747
MK4.K.467E	MK4	3-32	89	72	00748
MK5.K.462E	MK5	3-25	74	60	00749
MK5.K.467E	MK5	3-32	88	72	00750

**MK MANDRENLİ BAŞLIKLAR**

**DIN228 FORM B**



ELLE VE ANAHTARLA SIKILIP ÇÖZÜLEBİLİR.

- SALGI: MAX. 0,06 mm

SİP. NR.	KONİK	KAPASİTE (mm)	D (mm)	L (mm)	FİYAT KODU
MK3.0-10	MK3	0-10	35	75	00751
MK3.1-13	MK3	1-13	42	85	00752
MK3.1-16	MK3	1-16	49	100	00753
MK3.4-20	MK3	4-20	55	110	00754
MK4.1-13	MK4	1-13	42	85	00755
MK4.1-16	MK4	1-16	49	100	00756
MK4.4-20	MK4	4-20	55	115	00757