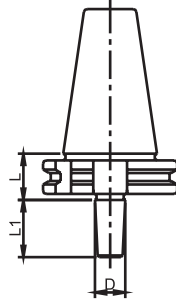
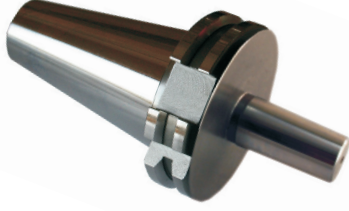


SK MANDREN MALAFALARI

DIN 69871



DIN 238

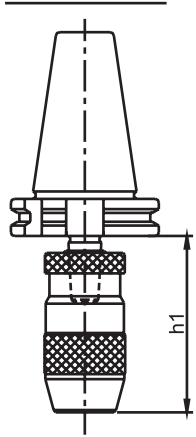
- MALZEME: 20 Mn Cr5
- SERTLİK: 58 ± 2 HRc (Derinlik 0,6-0,9 mm)
- AÇI: DIN 7178-1/AT3  
DIN 2080-1/AT3
- SALGI: MAX. 0,006 mm

SİP. NR.	KONİK	MANDREN KONIĞİ	L (mm)	D (mm)	L1 (mm)	FİYAT KODU
SK40.B16	SK40	B16	24	15,733	24	00720
SK40.B18	SK40	B18	24	17,780	32	00721

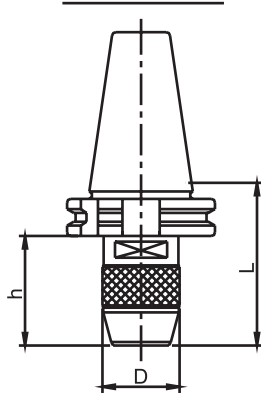
SK MANDRENLİ BAŞLIKLAR

DIN 69871

MANDREN MALAFASI İLE BAĞLAMA



MANDRENLİ BAŞLIK



ELLE VE ANAHTARLA SIKILIP ÇÖZÜLEBİLİR

- SALGI: MAX. 0,06 mm



MANDRENLİ BAŞLIK İLE  
DAHA KISA h MESAFESİ SAĞLANIR.

SİP. NR.	KONİK	KAPASİTE (mm)	L (mm)	D (mm)	h (mm)	FİYAT KODU
SK40.1-13	SK40	1-13	80	42	61	00722
SK40.1-16	SK40	1-16	95	49	76	00723