

SK VELDON TUTUCULAR

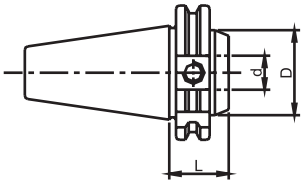
DIN 69871



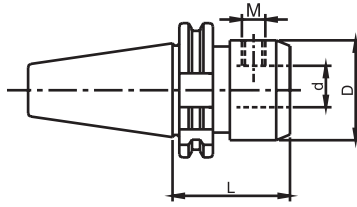
DIN 1835-B VELDON ÇİVATALARI  
İLE BİRLİKTE TESLİM EDİLİR.

DIN 6359  
DIN 1835-B  
DIN 6535-HB

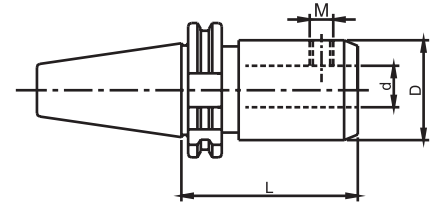
- MALZEME: 20 Mn Cr5
- SERTLİK:  $58 \pm 2$  HRc  
(Derinlik 0,6-0,9 mm)
- AÇI: DIN 7178-1/AT3  
DIN 2080-1/AT3
- SALGI: MAX. 0,006 mm



TİP 1 ( KISA BOY )



TİP 2 ( NORMAL BOY )



TİP 3 ( UZUN BOY )

| SİP. NR.      | KONİK | d (mm) | L (mm) | D (mm) | VELDON ÇİVATASI | ÇİVATA ADEDİ | TİP | FİYAT KODU |
|---------------|-------|--------|--------|--------|-----------------|--------------|-----|------------|
| SK40.06.V     | SK40  | 6      | 50     | 25     | M6x10           | 1            | 2   | 00644      |
| SK40.06.V-100 | SK40  | 6      | 100    | 25     | M6x10           | 1            | 3   | 00645      |
| SK40.08.V     | SK40  | 8      | 50     | 28     | M8x10           | 1            | 2   | 00646      |
| SK40.08.V-100 | SK40  | 8      | 100    | 28     | M8x10           | 1            | 3   | 00647      |
| SK40.10.V     | SK40  | 10     | 50     | 35     | M10x12          | 1            | 2   | 00648      |
| SK40.10.V-100 | SK40  | 10     | 100    | 35     | M10x12          | 1            | 3   | 00649      |
| SK40.12.V     | SK40  | 12     | 50     | 42     | M12x16          | 1            | 2   | 00650      |
| SK40.12.V-100 | SK40  | 12     | 100    | 42     | M12x16          | 1            | 3   | 00651      |
| SK40.14.V     | SK40  | 14     | 50     | 44     | M12x16          | 1            | 2   | 00652      |
| SK40.14.V-100 | SK40  | 14     | 100    | 44     | M12x16          | 1            | 3   | 00653      |
| SK40.16.V-35  | SK40  | 16     | 35     | 45     | M14x16          | 1            | 1   | 00654      |
| SK40.16.V     | SK40  | 16     | 63     | 48     | M14x16          | 1            | 2   | 00655      |
| SK40.16.V-100 | SK40  | 16     | 100    | 48     | M14x16          | 1            | 3   | 00656      |
| SK40.18.V     | SK40  | 18     | 63     | 50     | M14x16          | 1            | 2   | 00657      |
| SK40.18.V-100 | SK40  | 18     | 100    | 50     | M14x16          | 1            | 3   | 00658      |
| SK40.20.V-35  | SK40  | 20     | 35     | 45     | M14x12          | 1            | 1   | 00659      |
| SK40.20.V     | SK40  | 20     | 63     | 52     | M16x16          | 1            | 2   | 00660      |
| SK40.20.V-100 | SK40  | 20     | 100    | 52     | M16x16          | 1            | 3   | 00661      |
| SK40.25.V-35  | SK40  | 25     | 35     | 50     | M14x12          | 1            | 1   | 00662      |
| SK40.25.V     | SK40  | 25     | 100    | 65     | M18x2x20        | 2            | 2   | 00663      |
| SK40.32.V     | SK40  | 32     | 100    | 72     | M20x2x20        | 2            | 2   | 00664      |
| SK40.40.V     | SK40  | 40     | 120    | 80     | M20x2x20        | 2            | 2   | 00665      |