

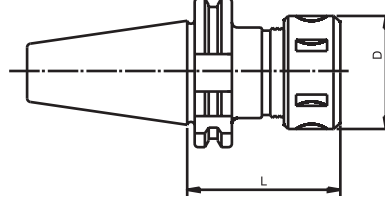
SK PENS BAŞLIKLARI

DIN 69871

OZ TİP



KAPAK İLE BİRLİKTE TESLİM EDİLİR.



DIN 6388
ISO 10897

- MALZEME: 20 Mn Cr5
- SERTLİK: 58 ± 2 HRc (Derinlik 0,6-0,9 mm)
- AÇI: DIN 7178-1/AT3
DIN 2080-1/AT3
- SALGI: MAX. 0,006 mm

SİP. NR.	KONİK	KAPASİTE (mm)	D (mm)	L (mm)	FİYAT KODU
SK40.462E	SK40	3-25	60	70	00620
SK40.462E-100	SK40	3-25	60	100	00621
SK40.467E	SK40	3-32	72	90	00622

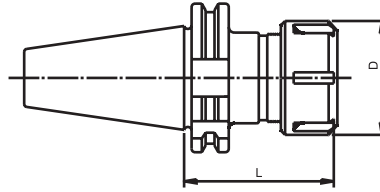
SK PENS BAŞLIKLARI

DIN 69871

ER TİP



KAPAK İLE BİRLİKTE TESLİM EDİLİR.



DIN 6499
ISO 15488

- MALZEME: 20 Mn Cr5
- SERTLİK: 58 ± 2 HRc (Derinlik 0,6-0,9 mm)
- AÇI: DIN 7178-1/AT3
DIN 2080-1/AT3
- SALGI: MAX. 0,006 mm

SİP. NR.	KONİK	KAPASİTE (mm)	D (mm)	L (mm)	FİYAT KODU
SK30.ER11-100	SK30	1-7	19	100	00623
SK30.ER16	SK30	1-10	28	60	00624
SK30.ER16-100	SK30	1-10	28	100	00625
SK30.ER25	SK30	1-16	42	60	00626
SK30.ER32	SK30	2-20	50	63	00627
SK30.ER32-OM*	SK30	2-20	50	60	00628
SK40.ER11-100	SK40	1-7	19	100	00629
SK40.ER11-160	SK40	1-7	19	160	00630
SK40.ER16	SK40	1-10	28	60	00631
SK40.ER16-100	SK40	1-10	28	100	00632
SK40.ER16-160	SK40	1-10	28	160	00633
SK40.ER25	SK40	1-16	42	60	00634
SK40.ER25-100	SK40	1-16	42	100	00635
SK40.ER25-160	SK40	1-16	42	160	00636
SK40.ER32	SK40	2-20	50	70	00637
SK40.ER32-OM*	SK40	2-20	50	70	00638
SK40.ER32-100	SK40	2-20	50	100	00639
SK40.ER32-160	SK40	2-20	50	160	00640
SK40.ER40	SK40	2-26	63	80	00641
SK40.ER40-100	SK40	2-26	63	100	00642
SK40.ER40-160	SK40	2-26	63	160	00643

* OM TİPLERİ AHŞAP İŞLEYEN MARANGOZ CNC TEZGAHLARI İÇİNDİR.