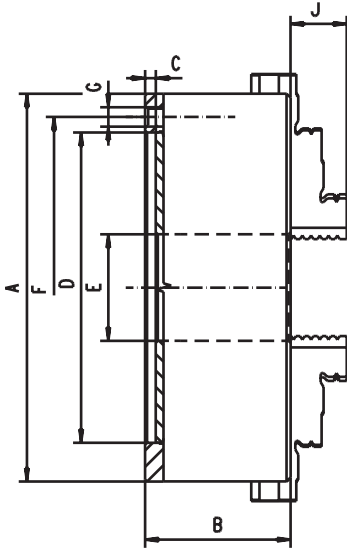


## 4 AYAKLI UNIVERSAL TORNA AYNASI

TİP K12

## ÖZELLİKLER

- 4 AYAKLI MERKEZİ SIKMALI UNIVERSAL TORNA AYNASI
- DÖKÜM GÖVDE
- UNIVERSAL TORNA TEZGAHLARINDA FENER MİLİ FLANŞ İLE BAĞLANIR
- FREZELER, DİVİZÖRLER VE TABLALARDA KULLANILIR.



										BİRİM mm
KOD	CHAR.80/4	CHAR.100/4	CHAR.125/4	CHAR.160/4	CHAR.200/4	CHAR.250/4	CHAR.315/4	CHAR.400/4	CHAR.500/4	CHAR.630/4
ØA	80	100	125	160	200	250	315	400	500	630
B	50	55	58	65	75	80	90	100	115	133,5
C	3,5	3,5	4	5	5	5	6	6	6	7
D H7	55	72	95	130	165	206	260	340	440	560
E	16	22	30	40	65	80	100	130	210	270
F	66	84	108	142	180	226	285	368	465	595
G	4XM6	3XM8	3XM8	6XM8	3XM10	3XM12	3XM16	3XM16	6XM16	6XM16
J	16	19,5	26	30	34	40	57	72	87	84,5
FİYAT KODU	14544	14545	14546	14547	14548	14549	14550	14551	14552	14553

STANDART AKSESUARLAR	1 TAKIM DÜZ AYAK	1 TAKIM TERS AYAK	1 ADET ANAHTAR	FLANŞ BAĞLAMA CİVATATASI