

Referans Nr.	a	b	Ød	e	f	t	$\frac{kg}{kg}$
2530-040012	400	600	18	-	-	M12	73
2530-050012	500	600	18	-	-	M12	112
2530-060012	600	800	18	-	-	M12	162
2530-140012	400	800	18	-	-	M12	119
2530-145012	450	900	18	-	-	M12	151
2530-150012	500	1000	18	-	-	M12	173

Referans Nr.	a	b	Ød	e	f	t	$\frac{kg}{kg}$
2530-040016	400	600	18	-	-	M16	87
2530-050016	500	600	18	-	-	M16	108
2530-060016	600	800	18	-	-	M16	155
2530-140016	400	800	18	-	-	M16	115
2530-145016	450	900	18	-	-	M16	146
2530-150016	500	1000	18	-	-	M16	171

Ürün Nr. 2530 CNC Dik İşleme Pleyti Delikli

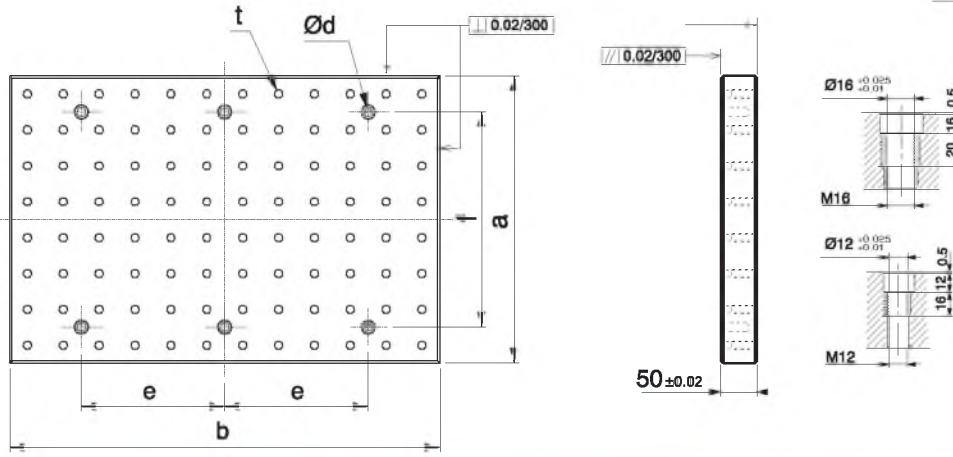
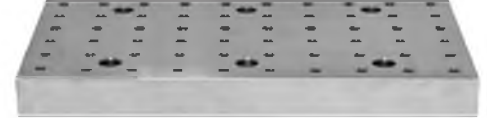
- Malzeme GG 26 DIN Normalize edilmiştir.
- Standart bağlama ekipmanlarına uyumludur.
- Yüzeyinde M12-M16 diş Merkez aralığı 50 ± 0.02
- Talebe göre çelik burçlu dişleri sertleştirilmiştir.

Not: Çelik burçlu
Referans Nr. 2540

Product Nr. 2530 CNC Vertical Processing Plate with Holes

- Material is normalized as GG 26 DIN.
- It is in compliance with Standard Coupling Equipment.
- M12 - M16 thread gap on it's surface is 50 ± 0.02 .
- According to the demand, it's steel bush threads are hardened.

Note: Steel bush
Reference No. 2540



CNC Dik İşleme Pleyti

CNC Vertical Processing Plate

Referans Nr.	a	b	c	d	e	f	Øg	h	i	j	$\frac{kg}{kg}$
2550-040014	400	600	60	14	50	100	18	-	-	50	90
2550-050014	500	600	60	14	50	100	18	-	-	50	115
2550-060014	600	800	60	14	50	100	18	-	-	50	198
2550-140014	400	800	60	14	50	100	18	-	-	50	120
2550-145014	450	900	60	14	75	100	18	-	-	50	162
2550-150014	500	1000	60	14	50	100	18	-	-	50	199

Referans Nr.	a	b	c	d	e	f	Øg	h	i	j	$\frac{kg}{kg}$
2550-040018	400	600	75	18	50	100	18	-	-	50	108
2550-050018	500	600	75	18	50	100	18	-	-	50	135
2550-060018	600	800	75	18	50	100	18	-	-	50	216
2550-140018	400	800	75	18	50	100	18	-	-	50	143
2550-145018	450	900	75	18	75	100	18	-	-	50	183
2550-150018	500	1000	75	18	50	100	18	-	-	50	225

Ürün Nr. 2550 Dik İşleme Pleyti "T" Kanallı

- Malzeme GG 26 DIN normalize edilmiştir.
- Standart bağlama ekipmanlarına uyumludur.
- "T" kanal ölçüsü 14mm - 18mm DIN 650 standartındadır.

Product Nr. 2550 CNC Vertical Processing Plate with "T" Slot

- Material is normalized as GG 26 DIN.
- It is in compliance with Standard Coupling Equipment.
- "T" Slot is in the standard of 14mm - 18mm DIN 650.

