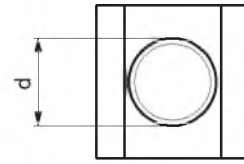
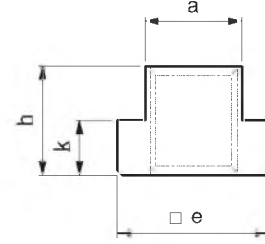


Referans Nr.	dx	a	e	h	k	(g)
1750-0608	M6x8	7.7	13	10	6	9
1750-0810	M8x10	9.7	15	12	6	12
1750-0812	M8x12*	11.7	18	14	7	22
1750-1012	M10x12					20
1750-0814	M8x14*					40
1750-1014	M10x14*	13.7	22	16	8	37
1750-1214	M12x14					30
1750-0816	M8x16*					60
1750-1016	M10x16*	15.7	25	18	9	55
1750-1216	M12x16*					55
1750-1416	M14x16					45
1750-0818	M8x18*					90
1750-1018	M10x18*	17.7	28	20	10	87
1750-1218	M12x18*					80
1750-1418	M14x18*					75
1750-1618	M16x18					65
1750-1620	M16x20*	19.7	32	24	12	115
1750-1820	M18x20					105
1750-1622	M16x22*	21.7	35	28	14	170
1750-1822	M18x22*					160
1750-2022	M20x22					150
1750-1624	M16x24*	23.7	40	32	16	260
1750-2024	M20x24*					240
1750-2224	M22x24					220
1750-1628	M16x28*	27.7	44	36	18	375
1750-2028	M20x28*					350
1750-2228	M22x28*					330
1750-2428	M24x28					330
1750-2436	M24x36*	35.6	54	44	22	665
1750-3036	M30x36					585
1750-3642	M36x42	41.6	65	52	26	1025


**DIN 508**
**Ürün Nr. 1750 “T” Pabuç**

- “T” Pabuçun mukavemeti için dişli kısmının tümüne vidalama yapılması gerekir
- Malzeme: Ck45 DIN
- Sertlik: 32-35 HRC
- Siyah kaplama

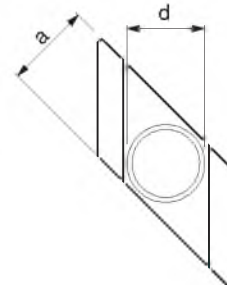
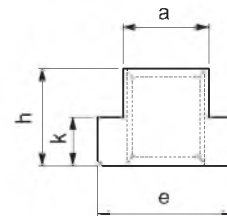
**Product Nr. 1750 “T” Clamp**

- Screwing must be done on the entire thread part for the endurance of “T” Clamp
- Material: Ck45 DIN
- Hardness: 32-35 HRC
- Black coating

**Dereceli “T” Pabuç**

## Graded “T” Clamp

Referans Nr.	dx	a	e	h	k	(g)
1770-0810	M8x10	9.7	15	12	6	10
1770-1012	M10x12	11.7	18	14	7	15
1770-1014	M10x14*	13.7	22	16	8	30
1770-1214	M12x14					25
1770-1416	M14x16	15.7	25	18	9	40
1770-1018	M10x18*	17.7	28	20	10	70
1770-1618	M16x18					60
1770-1620	M16x20*	19.7	32	24	12	95
1770-1820	M18x20					90
1770-1622	M16x22*	21.7	35	28	14	135
1770-2022	M20x22					125
1770-1628	M16x28*	27.7	44	36	18	330
1770-2028	M20x28*					295
1770-2428	M24x28					265


**Ürün Nr. 1770 Dereceli “T” Pabuç**

- “T” kanal pleytlere üstten “T” kanala girip bağlama özelliği vardır
- Malzeme: Ck45 DIN
- Sertlik: 32-35 HRC
- Siyah kaplama

**Product Nr. 1770 Graded “T” Clamp**

- It has the feature of making the coupling by entering “T” slot plates from the top
- Material: Ck45 DIN
- Hardness: 32-35 HRC
- Black coating