

Referans Nr.	d1 g6	h3	d2	h1	D	h	d3 (h8)	h2	d	Lf	d4	dp	M	Hava Basıncı Air Pressure (MPa)	Sıkma Kuvveti Clamping Force (N)	$\Delta(g)$
1489-18L4S	24	8	23.4	29.5	40	8	12	11	4.5	3.5	8	32	-	0.5	250	154
1489-26L4S	32	8.5	31.4	31.7	51	9.5	16	16	5.5	4	9.5	41	-	0.5	350	289
1489-18L4SG	24	8	23.4	29.5	40	8	12	11	4.5	3.5	8	32	M4x0.7	0.5	250	136
1489-26L4SG	32	8.5	31.4	31.7	51	9.5	16	16	5.5	4	9.5	41	M5x0.8	0.5	350	252

Ürün Nr. 1489 Pnömatik Bağlama

- Malzeme: Ck45 DIN
- Nikel Kaplama
- Tekrarlama Hassasiyeti $\pm 10\mu m$

Product Nr. 1489 Pneumatic Clamp

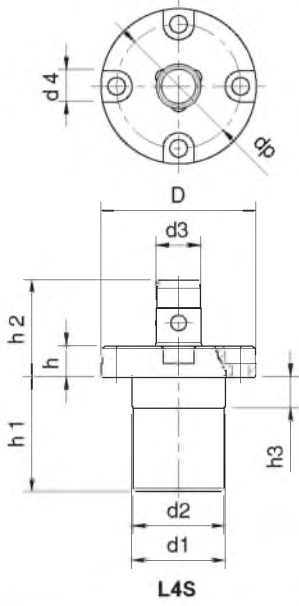
- Material: Ck45 DIN
- Nickel Coating
- Repeat Accuracy $\pm 10\mu m$



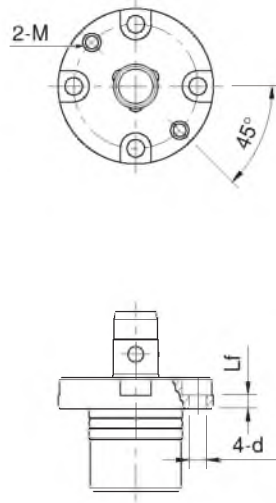
L4S



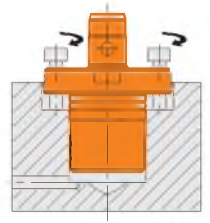
L4SG



L4S



L4SG



Pnömatik Bağlama Burç

Pneumatic Clamping Bush

Referans Nr.	D1 g6	h2	d2	h1	D	h	d e7	d1	Lf	d3	M	dp	$\Delta(g)$
1489-18BU	20	7.5	19.6	10.5	36	8	12.1	4.5	3.5	8	M4x0.7	28	57
1489-26BU	25	7	24.6	11	44	9.5	16.1	5.5	4	9.5	M5x0.8	34	97



Ürün Nr. 1489 Pnömatik Bağlama Burç

- Malzeme: Ck45 DIN
- Nikel Kaplama
- Tekrarlama Hassasiyeti $\pm 10\mu m$

Product Nr. 1489 Pneumatic Clamping Bush

- Material: Ck45 DIN
- Nickel Coating
- Repeat Accuracy $\pm 10\mu m$

