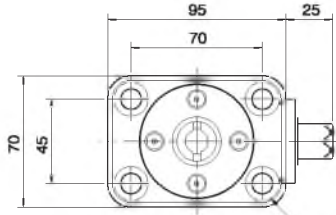


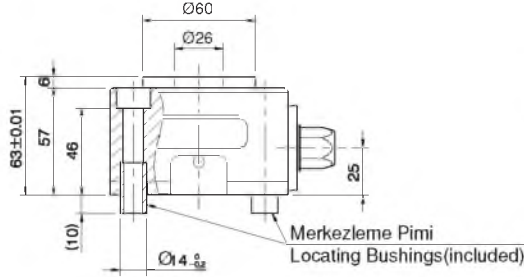
Referans Nr.	Sıkma Kuvveti Clamping Force Kgf	Tork N-m	 (kg)
1477-00012	1200	40	2.3

Ürün Nr. 1477 Pimli Bağlama

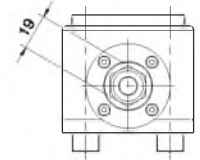
Product Nr. 1477 Power-tool Actuated Block Pull Clamps



Sabitleme Cıvata Yeri For M10 Cap Screws

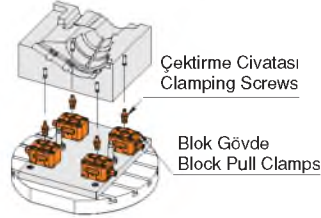


Merkezleme Pimi Locating Bushings (included)



1. 5 Eksen İşleme için İdeal Kullanım
İş parçasının bütün açık yüzeylerini işleme olanağı sağlar.

1. Ideal for 5-Axis Machining
Block Pull Clamps mount under a workpiece making its surfaces to be machined fully open for the cutting tool. This allows completing multiple machining processes at a time.



2. Daha iyi İşlenebilirlik
Blok çekme ile daha kolay iş bağlama ve klasik yöntemden daha kullanışlıdır.

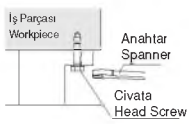
2. Better Workability

Block Pull Clamps allow fastening a workpiece easily, unlike the conventional method of fastening with hexagon head screws from below.

3. Uzun Anahtar Ünite Kullanımı
Birden fazla farklı parçaları işleme olanağı sağlar.

3. Actuated Remote-Control Units

If used in conjunction with Power-Tool Actuated Remote-Control Units, Block Pull Clamps can be installed at the best possible position under the workpiece.



Mevcut Uygulama Conventional Method

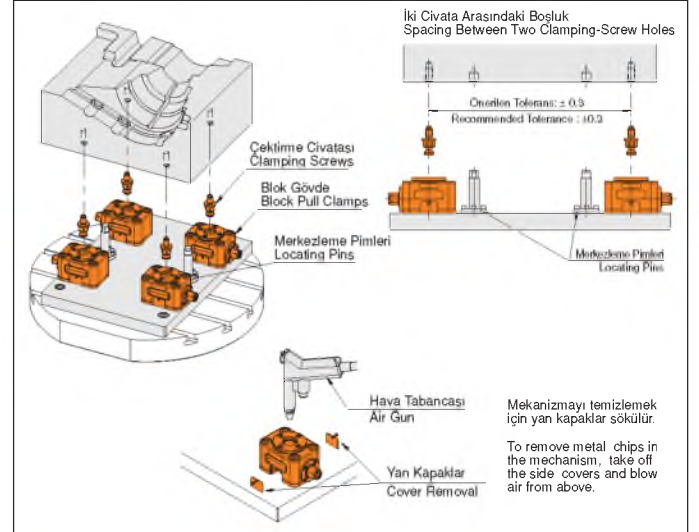


Çektirme Cıvatası ile Uygulama Application with pull stud



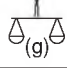
Uzun Anahtar Aktuatörü Ünitesi Power-Tool Actuated Remote-Control Unit

Kullanım Şekli / How To Use



Bağlama Cıvatası

Clamping Screws

Referans Nr.	M	L	 (g)
1478-00012	M12x	21	75
1478-00016	M16	28	98

Ürün Nr. 1478 Bağlama Cıvatası

- Malzeme: 42 CrMo 4 DIN
- Sertlik: 38-42 HRC
- Siyah Kaplama

Product Nr. 1478 Clamping Screws

- Material: 42 CrMo 4 DIN
- Hardness: 38-42 HRC
- Black coated

