

Referans Nr.	L	b1	metrik		a	b2	b3	e1	e2	d	(g)			
			metrik	whitworth										
1330-06050	50	6,6	M6	1/4	10	20	8	10	20	M8	50			
1330-08060	60	9	M8	5/16	12	25	10	13	22	M8	105			
1330-10080	80	11	M10	3/8	15	30	12	15	30	M10	210			
1330-12100	100	14,5	M12-M14	1/2	20	40	14	21	40	M12	465			
1330-12125	125							21	50		590			
1330-16125	125	18,5	M16-M18	5/8	25	50	18	26	45	M16	930			
1330-16160	160							26	65		1200			
1330-20160	160	22,5	M20-M22	3/4	30	60	22	30	60	M20	1710			
1330-20200	200							30	80		2170			
1330-20250	250							35	70		30	100	3885	
1330-24160	160	26	M24	1	30	70	26	60	60	M24	1965			
1330-24200	200							35	70		26	80	2920	
1330-24250	250							35	70		30	35	100	3720
1330-24315	315							40	80		35	130	6435	
1330-30250	250							33	M30		11/4	40	80	34
1330-30315	315	50	130	7665										
1330-36400	400	43	M36-M42	11/2	60	100	43	100	150	M30	14490			

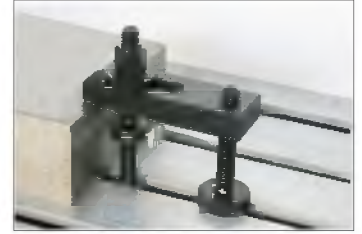
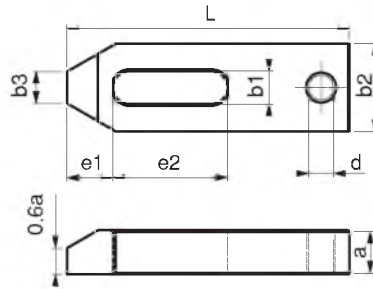


Ürün Nr. 1330 Destek Delikli Düz Pabuç

- Malzeme Ck45 DIN
- Sertlik 32-35 HRC
- Siyah Kaplama

Product Nr. 1330 Straight Clamp with Support Hole

- Material Ck45 DIN
- Hardness 32-35 HRC
- Black Coating



Düz Pabuç

Straight Clamp

Referans Nr.	L	b1	metrik		a	b2	b3	e1	e2	(g)
			metrik	whitworth						
1350-06050	50	6,6	M6	1/4	10	20	8	10	20	60
1350-08060	60	9	M8	5/16	12	25	10	13	22	110
1350-10080	80	11	M10	3/8	15	30	12	15	30	185
1350-12100	100	14,5	M12-M14	1/2	20	40	14	21	40	480
1350-12125	125							21	50	610
1350-16125	125	18,5	M16-M18	5/8	25	50	18	26	45	980
1350-16160	160							26	65	1240
1350-20160	160	22,5	M20-M22	3/4	30	60	22	30	60	1795
1350-20200	200							30	80	2255
1350-24200	200							35	70	26
1350-24250	250	40	80	35	100	3875				
1350-30250	250	33	M30	11/4	40	80	34	45	100	4990
1350-30315	315							50	130	7885
1350-36400	400	43	M36-M42	11/2	60	100	43	100	150	14450



DIN 6314

Ürün Nr. 1350 Düz Pabuç

- Malzeme Ck45 DIN
- Sertlik 32-35 HRC
- Siyah Kaplama

Product Nr. 1350 Straight Clamp

- Material Ck45 DIN
- Hardness 32-35 HRC
- Black Coating

