

Referans Nr.	m	L	SW		(g)
1130-0818	M18	83	10	-	235
1150-0920	M20	96	12	-	360
1160-1024	M24	134	12	24	795

**Ürün Nr. 1130-1150-1160 Pabuç Kaldırma Civata ve Somunu**

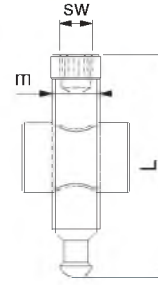
- Kalite 10.9
- Siyah Kaplama

**Product Nr. 1130-1150-1160 Clamp Lifting Bolt and Nut**

- Quality 10.9
- Black Coating

**Pabuç Kaldırma Civata ve Somunu**

Clamp Lifting Bolt and Nut



Referans Nr.	m	L	d	sw	(g)
1130-412	M12	30	20.5	10	45
1130-416	M16	34	20.5	10	75
1150-516	M16	34	24.5	12	75
1150-518	M18	38	24.5	12	90
1150-520	M20	38	24.5	12	105
1160-620	M20	45	34	12	170
1160-622	M22	49	34	12	95
1160-624	M24	46	34	12	205
1160-724	M24	55	34	12	405
1160-730	M30*	66	38.5	12	400

**Sabitleme İmbus Civatası**

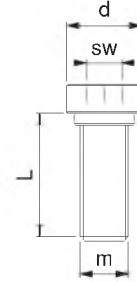
Imbus Bolt for Fixing

**Ürün Nr. 1130-1150-1160 Sabitleme İmbus Civatası**

- M12-M16-M18-M20 dış delikler için
- Kalite 10.9
- Siyah kaplama

**Prod. Nr. 1130-1150-1160 İmbus Bolt for Fixing**

- For M12-M16-M18-M20 thread holes
- Quality 10.9
- Black Coating



Referans Nr.	Tezgah Kanalı	m	L	d	sw	(g)
1130-614	14	M12	30	20.5	10	80
1130-616	16	M12	30	20.5	10	100
1130-618	18	M12	30	20.5	10	130
1130-620	20	M12	36	20.5	10	180
1130-622	22	M12	36	20.5	10	220
1150-718	18	M16	34	24.5	12	145
1150-720	20	M16	34	24.5	12	190
1150-722	22	M16	34	24.5	12	260
1150-724	24	M16	42	24.5	12	350
1150-728	28	M16	42	24.5	12	470
1160-822	22	M20	45	34	12	320
1160-824	24	M20	45	34	12	410
1160-828	28	M24	55	34	12	580
1160-832	32	M24	61	34	12	603
1160-836	36	M24	66	38.5	12	865

**Sabitleme İmbus Civata ve "T"**

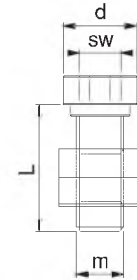
Fixing Imbus Bolt and "T"

**Ürün Nr. 1130-1150-1160 Sabitleme İmbus Civata ve "T"**

- (a) 14-28 "T" kanal sabitleme imbus civata ve "T" pabuç DIN 508
- Kalite 10.9
- Siyah kaplama

**Prod. Nr. 1130-1150-1160 Fixing Imbus Bolt and "T"**

- (a) 14-28 "T" Slot fixing imbus bolt and "T" clamp DIN 508
- Quality 10.9
- Black coating



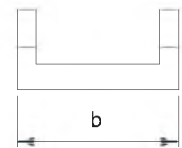
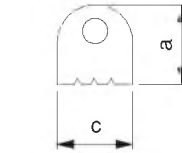
Referans Nr.	a	b	c	(g)
1130-DP	17	32	15	20
1130-BSP	19	32	15	30
1130-ESP	22	32	15	30
1150-DP	19	38	18	40
1150-BSP	21	38	18	40
1150-ESP	25	38	18	50
1160-DP	22	44	22	55
1160-BSP	25	44	22	70
1160-ESP	28	44	22	80

**Ürün Nr. 1130-1150-1160 Ön Baskı Pabucu**

- Ürün DP : Düz parça sıkma
- Ürün BSP: Boyuna silindirik sıkma
- Ürün ESP: Enine silindirik sıkma
- Malzeme 42 CrMo 4 DIN
- Sertlik 28-32 HRC

**Prod. Nr. 1130-1150-1160 Front Press Clamp**

- Product DP : Straight piece clamping
- Product BSP: Longitudinal cylinder clamping
- Product ESP: Lateril cylinder clamping
- Material 42 CrMo 4 DIN
- Hardness 28-32 HRC


**Ön Baskı Pabucu**

Front Press Clamp

