

Referans Nr.	a	m	h		s	e1	e2	d	sw	L	b	e3	c	g	
			min	max											
1130-014 DT	14	M12	45	105	15-83	158	83	M18	10	130	48	45	16	4750	
1130-016 DT	16	M12	45	105	15-83	158	83	M18	10	130	48	45	16	4775	
1130-018 DT	18	M12	45	105	15-83	158	83	M18	10	130	48	45	16	4805	
1130-020 DT	20	M12	45	105	15-83	158	83	M18	10	130	48	45	16	4855	
1130-022 DT	22	M12	45	105	15-83	158	83	M18	10	130	48	45	16	4905	
1150-118 DT	18	M16	48	110	18-96	173	90	M20	12	140	55	48	18	6625	
1150-120 DT	20	M16	48	110	18-96	173	90	M20	12	140	55	48	18	6690	
1150-122 DT	22	M16	48	110	18-96	173	90	M20	12	140	55	48	18	6750	
1150-124 DT	24	M16	48	110	18-96	173	90	M20	12	140	55	48	18	6840	
1150-128 DT	28	M16	48	110	18-96	173	90	M20	12	140	55	48	18	6960	
1160-222 DT	22	M20	79	139	22-95	235	114	M24	12	24	178	74	59	24	13330
1160-224 DT	24	M20	79	139	22-95	235	114	M24	12	24	178	74	59	24	13465
1160-228 DT	28	M24	79	139	22-95	235	114	M24	12	24	178	74	59	24	13580
1160-236 DT	36	M24	79	139	22-95	235	114	M24	12	24	178	74	59	24	13890

### Ürün Nr. 1130:Alt Destekli K.K.S.P

- M12 İmbus civata DIN 508 "T" pabuçla kullanılır.
- Parça yükseklik sıkma aralığı 45-105mm
- Sıkma kuvveti 2000kgf

### Product Nr. 1130:Bottom Supported K.K.S.P

- M12 imbus bolt is used with DIN 508 "T" clamp.
- Height clamping gap of the piece is 45-105mm
- Clamping Force is 2000kgf

### Ürün Nr. 1150:Alt Destekli K.K.S.P

- M16 İmbus civata DIN 508 "T" pabuçla kullanılır.
- Parça yükseklik sıkma aralığı 48-110mm
- Sıkma kuvveti 2500kgf

### Product Nr. 1150:Bottom Supported K.K.S.P

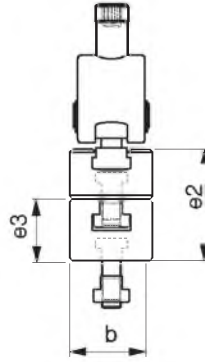
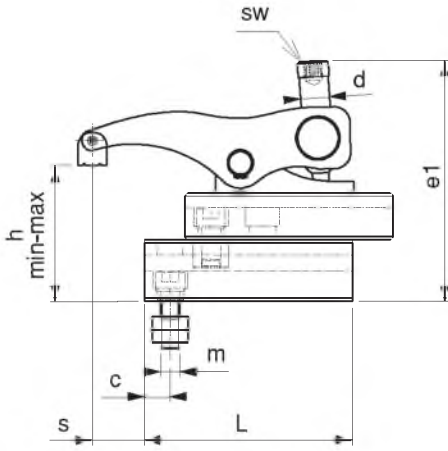
- M16 imbus bolt is used with DIN 508 "T" clamp.
- Height clamping gap of the piece is 48-110mm
- Clamping Force is 2500kgf

### Ürün Nr. 1160:Alt Destekli K.K.S.P

- M20-M24 İmbus civata DIN 508 "T" pabuçla kullanılır.
- Parça yükseklik sıkma aralığı 79-139mm
- Sıkma kuvveti 5500kgf

### Product Nr. 1160:Bottom Supported K.K.S.P

- M20-M24 imbus bolt is used with DIN 508 "T" clamp.
- Height clamping gap of the piece is 79-139mm
- Clamping Force is 5500kgf



### UYGULAMA:

- 1- Alt desteği iş parçasına uygun şekle getir sabitle
- 2- K.K.S.P destekler artırılarak istenilen mesafeye ulaşılır
- 3- K.K.S.P imbus civata ile "T" pabuca karşılık "T" kanala tak istenilen pozisyona getir.
- 4- Pabuç imbus civatasıyla iş parçasını sabitle

### APPLICATION

- 1- Bottom support is brought to suitable form with the work piece and then it is fixed.
- 2- Desired distance is reached by increasing K.K.S.P supports
- 3- K.K.S.P. is applied in "T" slot with imbus bolt against "T" clamp
- 4- Work piece is fixed with the imbus bolt of the clamp

