


Referans Nr.	inch	hatve halve	L	b	h	$\frac{n}{t7}$	c	k	j	e	m	s	$\varnothing$ min	 (g)
2770-0612	6" inch	1.5x60	72	32	32	12	5	15	20	11	22	10	6.5	1460
2770-0814	8" inch	1.5x60	98	37	37	14	5	24	25	13	22	14	8.5	2785
2770-1016	10" inch	1.5x60	110	42	42	16	5	30	30	13	29	14	10	4060
2770-1218	12" inch	1.5x60	130	50	52	18	5	39	30	15	32	17	12	6510
2770-1221	12" inch	1.5x60	130	50	52	21	5	39	30	17	32	19	12	6575
2775-0612	6" inch	1.5x60	72	30	37	12	5	15	20	11	17	10	6.5	1415
2775-0814	8" inch	1.5x60	95	35	67	14	5	24	25	13	19	14	8.5	4465
2775-1016	10" inch	1.5x60	110	40	77	16	5	30	30	13	19	14	10	6850
2775-1218	12" inch	1.5x60	130	50	77	18	5	39	30	15	23	17	12	10075
2775-1221	12" inch	1.5x60	130	50	77	21	5	39	30	17	23	19	12	9600

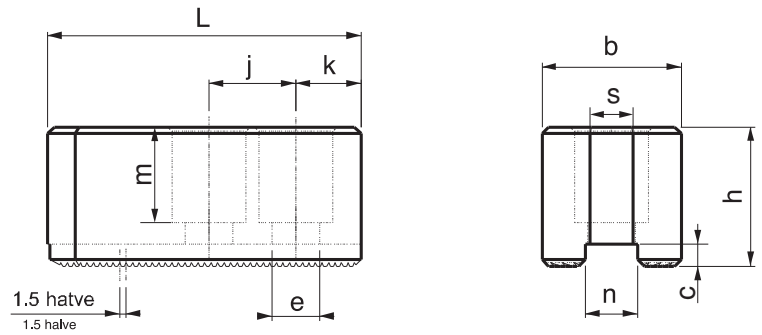



### Ürün Nr. 2770 - 2775 CNC Torna Yumuşak Ayak

- 6" - 8" - 10" - 12" inch aynalar için
- Malzeme: Ck45 DIN

### Product Nr. 2770 - 2775 CNC Lathe Chuck Soft Podous

- For chucks of 6" - 8" - 10" and 12"
- Material: Ck45 DIN



Referans Nr.	inch	L	h	$\frac{n}{T6}$	n1	h1	d	j	 (g)
2790-0610	6" inch	38	18.5	12	18	7.5	M10	20	55
2790-0812	8" inch	45	21.5	14	21	8.5	M12	25	85
2790-1012	10" inch	52	21.5	16	22	8.5	M12	30	115
2790-1214	12" inch	55	33.5	18	26.5	13.5	M14	30	225
2790-1216	12" inch	55	27	21	29	13.5	M16	30	210

## Yumuşak Ayak "T" Pabucu

CNC Soft Podous "T" Clamp



### Ürün Nr. 2790 CNC Torna Yumuşak Ayak "T" Pabucu

- 6" - 8" - 10" - 12" inch aynalar için
- Malzeme: Ck45 DIN
- Sertlik 32-35 HRC
- Siyah Kaplama

### Product Nr. 2790 CNC Lathe Chuck Soft Podous "T" Clamp

- For chucks of 6" - 8" - 10" and 12"
- Material: Ck45 DIN
- Hardness: 32-35 HRC
- Black Coating

