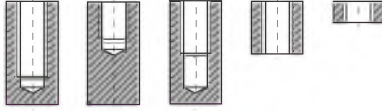


PRO-X**3'LÜ TAKIM
EL KILAVUZU****ISO metrik normal DIN 13
ISO metric coarse threads DIN 13**

Ön, orta ve son kılavuzdan oluşan el kılavuzu setidir.
Som kılavuz makina kılavuzu olarak da kullanılır.

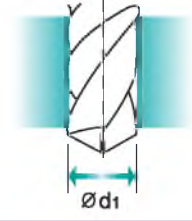
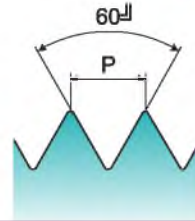
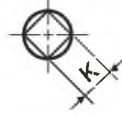
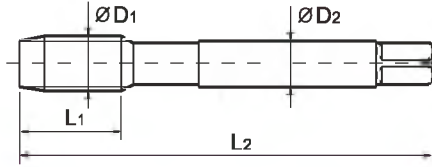
This tap is a serial hand tap in set, First, Second and Bottoming.
Bottoming tap of set has final internal thread dimensions only.

Delik Tipi

Ön

Orta

Son

HSS**DIN
352****6H****Parlak****Kılavuz Seti
Sets of taps**

Ölçü : mm

ÖLÇÜ	Adım	KOD	Diş Boyu	Tam Boy	Şaft Çapı	Dört Köşe Ölçüsü	Kılavuz Matkap Çapı	
D ₁	P		L ₁	L ₂	D ₂	K	d ₁	
M2	× 0.4	PKI-1M2	8	36	2.8	2.1	1.6	
M2.2	× 0.45	PKI-1M2N2	9	36	2.8	2.1	1.75	
M2.3	× 0.4	PKI-1M2N3	9	36	2.8	2.1	1.9	
M2.5	× 0.45	PKI-1M2N5	9	40	2.8	2.1	2.05	
M2.6	× 0.45	PKI-1M2N6	9	40	2.8	2.1	2.1	
M3	× 0.5	PKI-1M3	11	40	3.5	2.7	2.5	
M3.5	× 0.6	PKI-1M3N5	13	45	4	3	2.9	
M4	× 0.7	PKI-1M4	13	45	4.5	3.4	3.3	
M4.5	× 0.75	PKI-1M4N5	16	50	6	4.9	3.7	
M5	× 0.8	PKI-1M5	16	52	6	4.9	4.2	
M5.5	× 0.9	PKI-1M5N5	18	56	6	4.9	4.6	
M6	× 1	PKI-1M6	18	56	6	4.9	5	
M7	× 1	PKI-1M7	18	56	6	4.9	6	
M8	× 1.25	PKI-1M8	20	63	6	4.9	6.8	
M9	× 1.25	PKI-1M9	20	63	7	5.5	7.8	
M10	× 1.5	PKI-1M10	22	70	7	5.5	8.5	
M11	× 1.5	PKI-1M11	22	70	8	6.2	9.5	
M12	× 1.75	PKI-1M12	24	80	9	7	10.2	
M14	× 2	PKI-1M14	26	80	11	9	12	
M16	× 2	PKI-1M16	27	80	12	9	14	
M18	× 2.5	PKI-1M18	30	95	14	11	15.5	
M20	× 2.5	PKI-1M20	32	95	16	12	17.5	
M22	× 2.5	PKI-1M22	32	100	18	14.5	19.5	
M24	× 3	PKI-1M24	34	110	18	14.5	21	
M27	× 3	PKI-1M27	36	110	20	16	24	
M30	× 3.5	PKI-1M30	40	125	22	18	26.5	
M33	× 3.5	PKI-1M33	40	125	25	20	29.5	
M36	× 4	PKI-1M36	50	150	28	22	32	
M39	× 4	PKI-1M39	50	150	32	24	35	
M42	× 4.5	PKI-1M42	56	150	32	24	37.5	
M45	× 4.5	PKI-1M45	58	160	36	29	40.5	
M48	× 5	PKI-1M48	65	180	36	29	43	
M52	× 5	PKI-1M52	65	180	40	32	47	